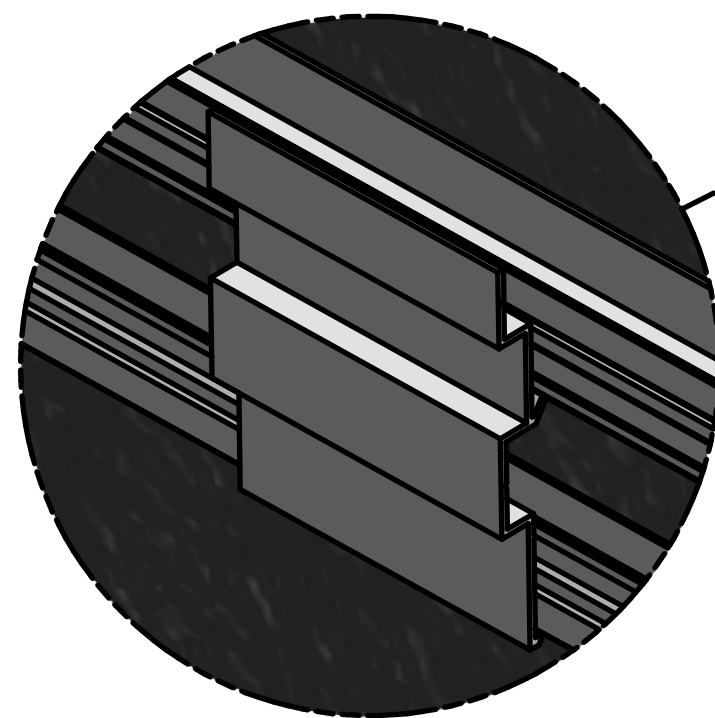
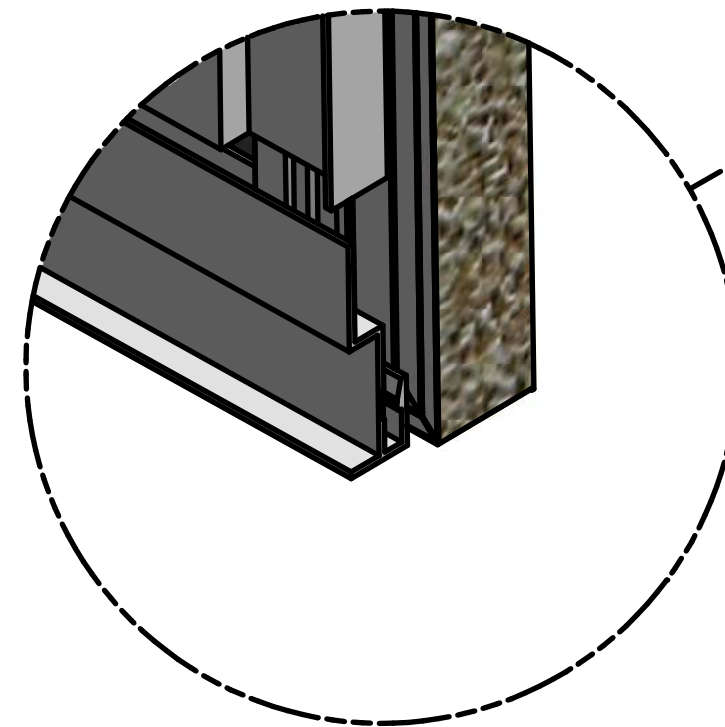


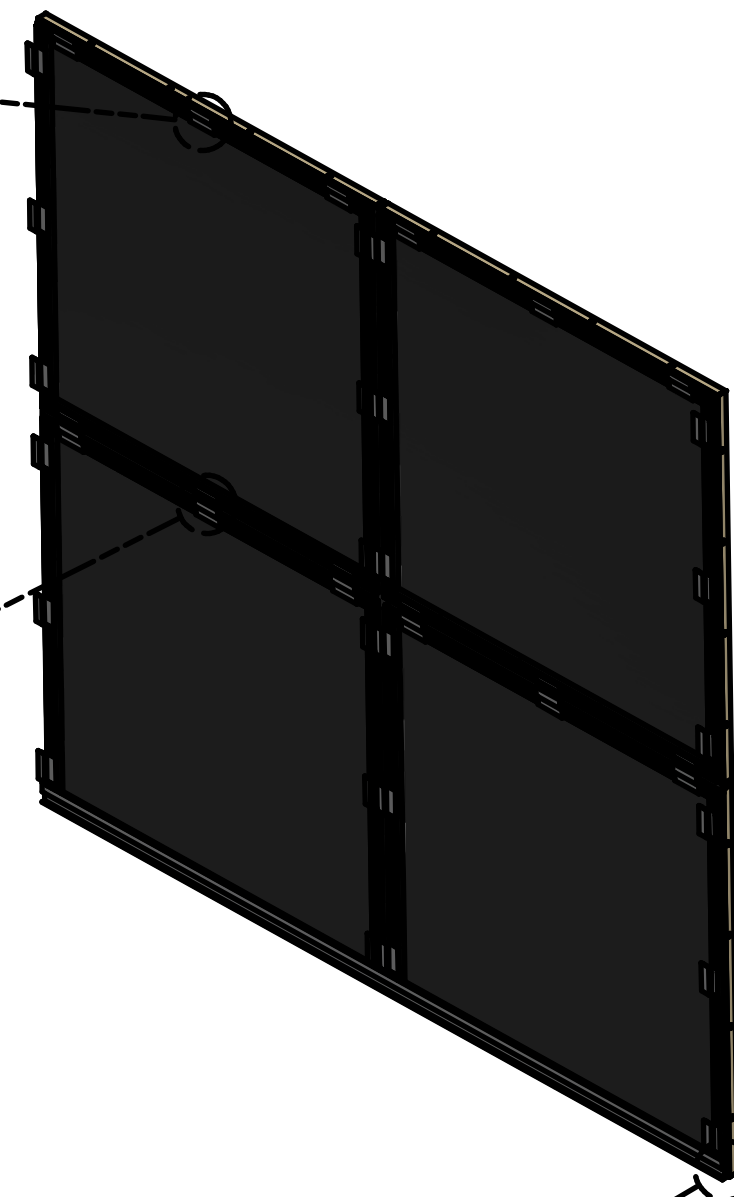
END CLIP
W3410



INTERMEDIATE CLIP
W2369



STARTER STRIP
W2370



OMNI GLASS & PAINT, INC.
3530 OMNI DRIVE
OSHKOSH, WI 54903

PM NAME: JASON HOULE
PM PHONE: 920-233-3333
PM FAX: 920-236-7890

PROJECT: **OMNI RS™**
PRESSURE EQUALIZED RAINSCREEN SYSTEM

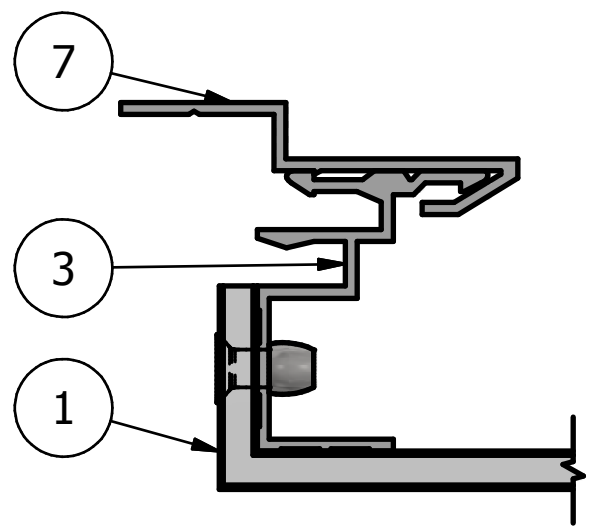
ARCHITECT:

CONTRACTOR: OMNI GLASS & PAINT, INC. - OSHKOSH, WI

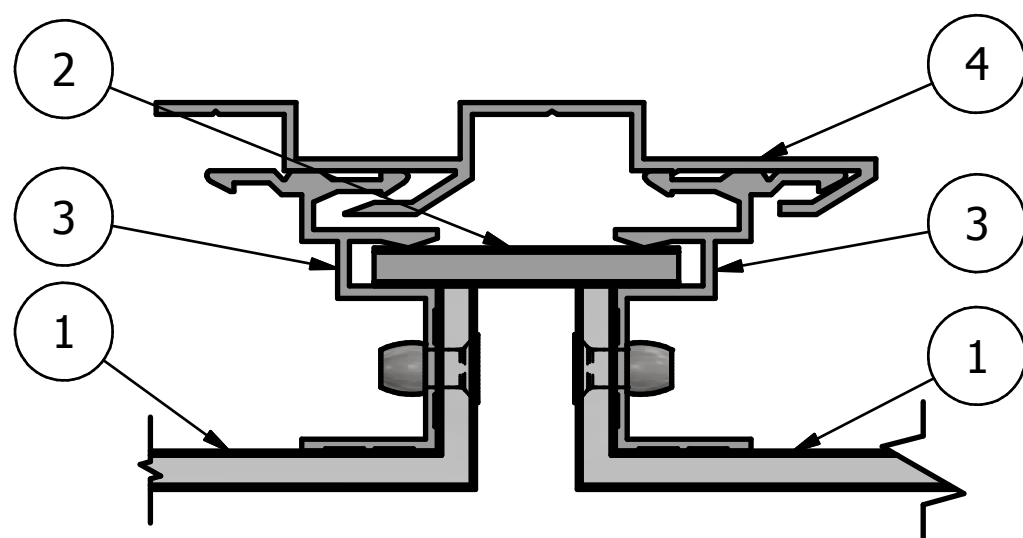
DESCRIPTION: ISOMETRIC VIEWS

SCALE:	1/2" = 1'-0"
DATE:	
DRAFTER:	
OMNI JOB #:	
PAGE NO:	SHEET:

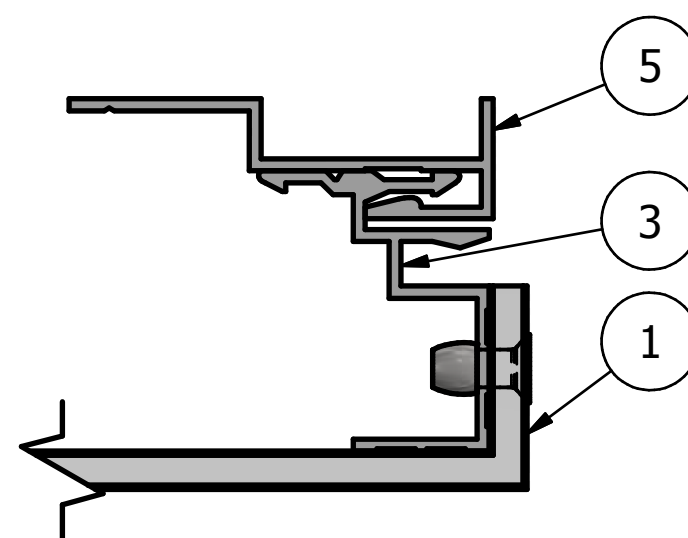
OMNI RS™
PRESSURE EQUALIZED RAINSCREEN SYSTEM
www.omnigp.com • (800) 236-8222



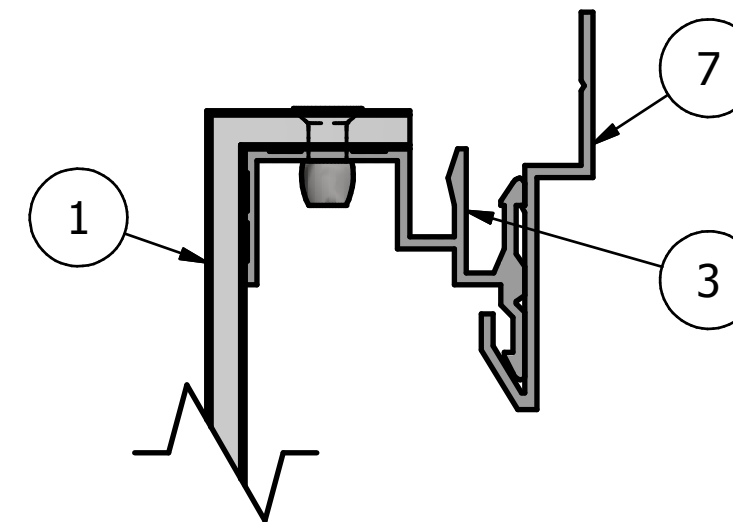
VERTICAL END DETAIL



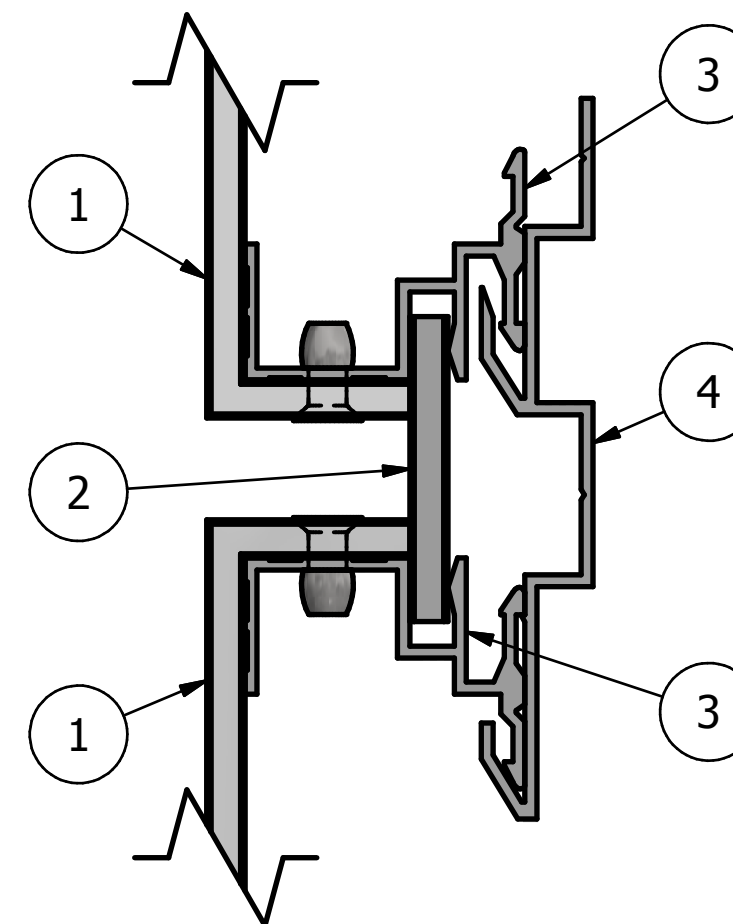
VERTICAL INTERMEDIATE DETAIL



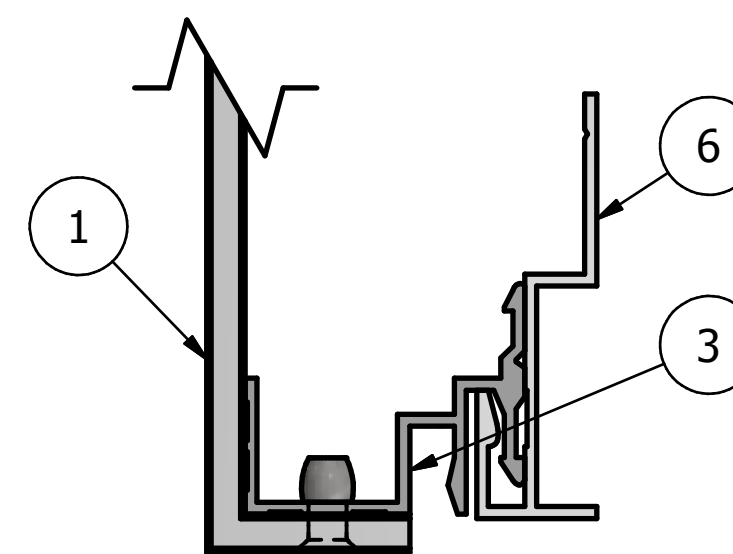
VERTICAL START DETAIL



TOP OF PANEL DETAIL



HORIZONTAL INTERMEDIATE DETAIL



BOTTOM OF PANEL DETAIL

PARTS LIST		
ITEM	PART NO.	DESCRIPTION
1	ACP	ALUMINUM COMPOSITE PANEL
2	RS	RAINSCREEN STRIP
3	W1793	PERIMETER
4	W2369	INTERMEDIATE CLIP
5	W2370-CLIP	STARTER CLIP
6	W2370	STARTER STRIP
7	W3410	END CLIP

OMNI RS™
PRESSURE EQUALIZED RAINSCREEN SYSTEM
www.omnigp.com • (800) 236-8222



OMNI GLASS & PAINT, INC.
 3530 OMNI DRIVE
 OSHKOSH, WI 54903

PM NAME: JASON HOULE
 PM PHONE: 920-233-3333
 PM FAX: 920-236-7890

PROJECT:

OMNI RS™
PRESSURE EQUALIZED RAINSCREEN SYSTEM

ARCHITECT:

CONTRACTOR:

OMNI GLASS & PAINT, INC. - OSHKOSH, WI

DESCRIPTION:

DETAILS

SCALE:

9" = 1'-0"

DATE:

DRAFTER:

OMNI JOB #:

PAGE NO:

SHEET: