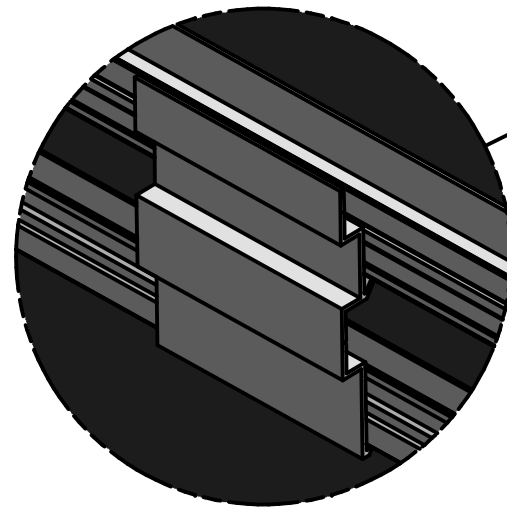
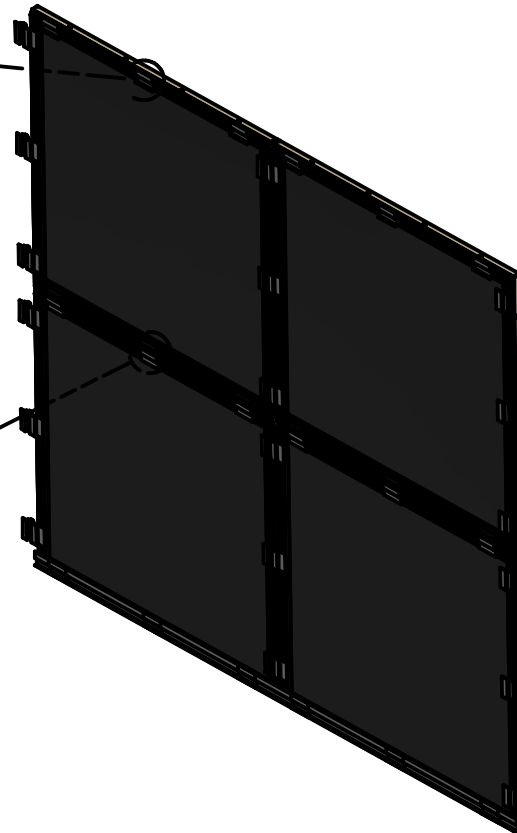


STARTER CLIP
W2370



INTERMEDIATE CLIP
W2369



OMNI GLASS & PAINT, INC.
3530 OMNI DRIVE
OSHKOSH, WI 54903

PM NAME: JASON HOULE
PM PHONE: 920-233-3333
PM FAX: 920-236-7890

OMNI RS™
PRESSURE EQUALIZED RAINSCREEN SYSTEM
www.omnigp.com • (800) 236-8222

PROJECT: **OMNI RS™**
PRESSURE EQUALIZED RAINSCREEN SYSTEM

ARCHITECT:

CONTRACTOR: **OMNI GLASS & PAINT, INC. - OSHKOSH, WI**

DESCRIPTION: **ISOMETRIC VIEWS**

SCALE: 1/2" = 1'-0"

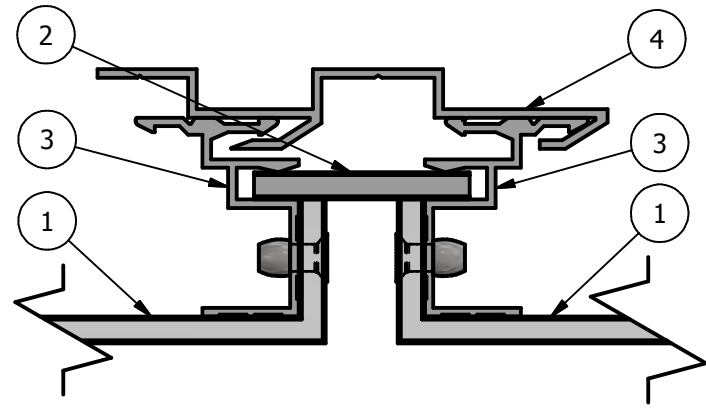
DATE:

DRAFTER:

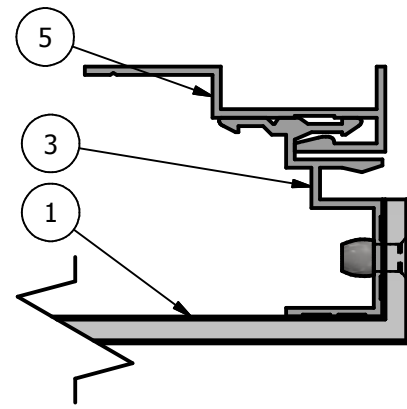
OMNI JOB #:

PAGE NO:

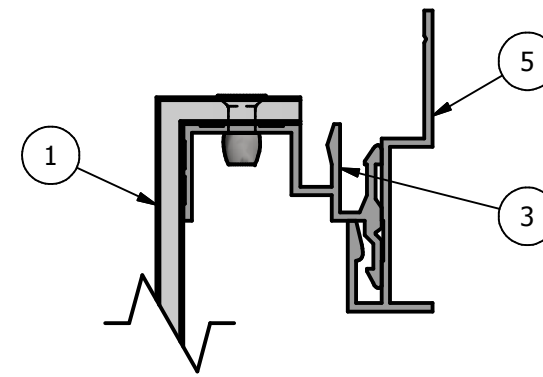
SHEET:



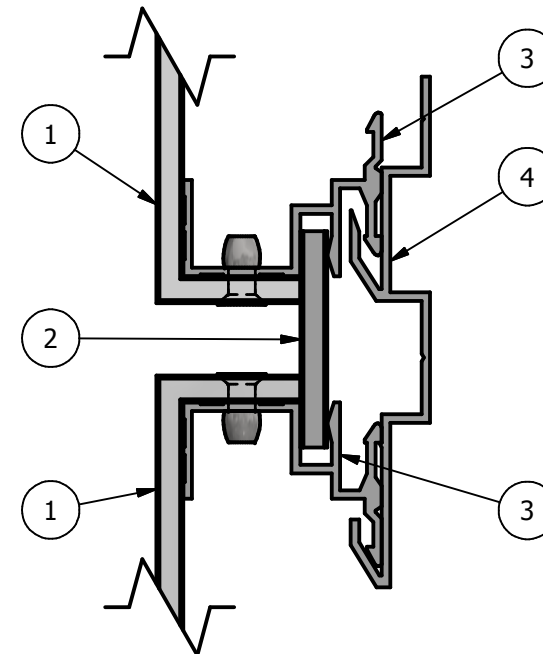
VERTICAL INTERMEDIATE DETAIL



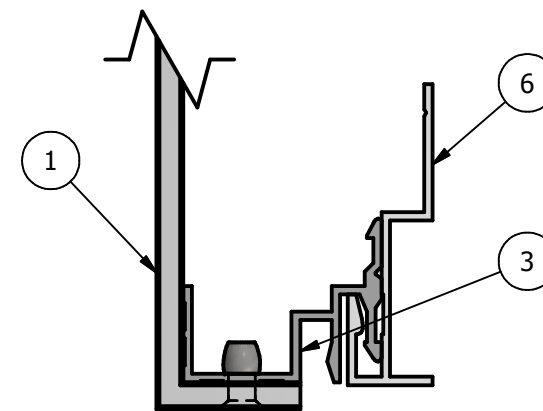
VERTICAL END DETAIL



TOP OF PANELLING DETAIL



HORIZONTAL INTERMEDIATE DETAIL



BOTTOM OF PANELLING DETAIL

PARTS LIST		
ITEM	PART NO.	DESCRIPTION
1	ACP	ALUMINUM COMPOSITE PANEL
2	RS	RAINSCREEN STRIP
3	W1793	PERIMETER
4	W2369	INTERMEDIATE CLIP
5	W2370	STARTER CLIP
6	W2370-SS	STARTER STRIP

OMNI RS™
PRESSURE EQUALIZED RAINSCREEN SYSTEM
www.omnigp.com • (800) 236-8222



OMNI GLASS & PAINT, INC.
 3530 OMNI DRIVE
 OSHKOSH, WI 54903

PM NAME: JASON HOULE
 PM PHONE: 920-233-3333
 PM FAX: 920-236-7890

PROJECT:

OMNI RS™
PRESSURE EQUALIZED RAINSCREEN SYSTEM

ARCHITECT:

CONTRACTOR:

OMNI GLASS & PAINT, INC. - OSHKOSH, WI

DESCRIPTION:

DETAILS

SCALE:

9" = 1'-0"

DATE:

DRAFTER:

OMNI JOB #:

PAGE NO:

SHEET: